

## 0.01—2.0 GHz High Isolation 2-way Power Divider/Combiner AMPD-00010200



### Applications

- High Frequency, Very High Frequency (HF/VHF) communications
- Instrumentation

### Product Description

The AMPD-0010200 2-way Power Divider/Splitter or Power Combiner depending on the RF Input/Output configuration that is fast becoming a staple offering to customers as part of our line of passive components. AmpliTech design enhancements allow for a very high isolation of greater than 20 dB (cross-port across the entire band). This, coupled with the low Insertion Loss of less than 0.5 dB is an example of how AmpliTech's design expertise can enhance the performance of mainstream devices to exceed customers' expectations at every turn.

### Key Specifications at +23°C

Parameter	Unit	Minimum	Typical	Maximum	Notes
Frequency	GHz	0.01	-	2.0	Customizable
Isolation	dB	20 dB	20 dB	-	-
Insertion Loss	dB	-	0.5	0.9	Across whole band
Phase Unbalance	°	-	-	6	Across whole band
Amplitude Unbalance	dB	-	-	0.5	Across whole band
Outline/Package	-	-	-	-	Custom

### Features

- 0.01 to 2.0 GHz Frequency Range
- $\geq 20$  dB Typical Cross-port Isolation
- $\leq 0.5$  dB Typical Insertion Loss
- Shielded Weatherproof Housing
- MIL-883, MIL-45208 construction and reliability
- Hermetic Seal Option
- +RoHS compliant in accordance with EU Directive (2002/95/EC)

## Absolute Maximum Ratings\*

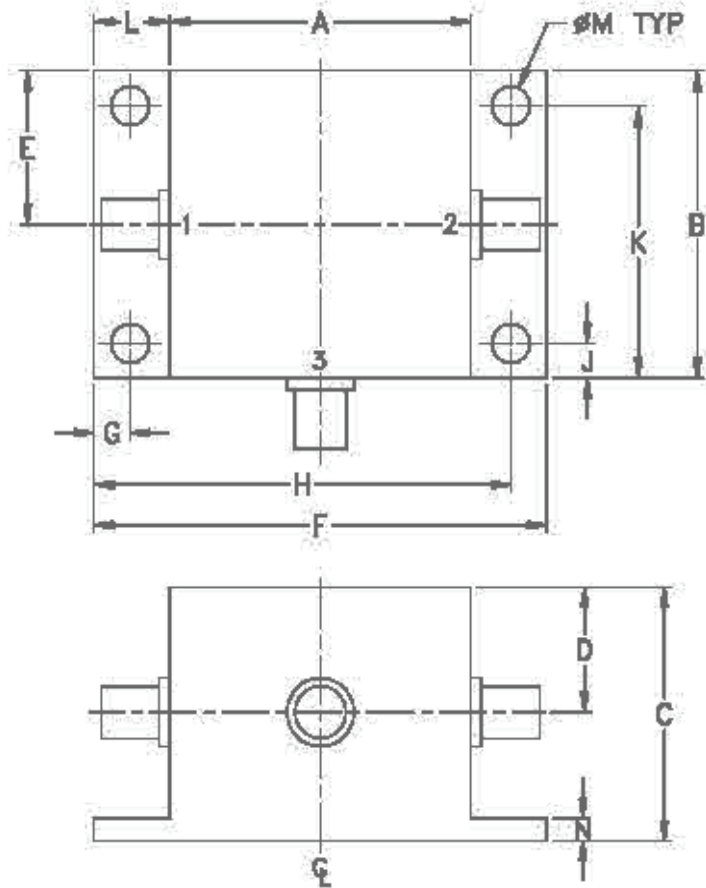
Parameter	Unit	Minimum	Maximum	Notes
Operating Temperature (Case)	°C	-55	+100	95% humidity, non-condensing
Storage Temperature (Case)	°C	-55	+100	95% humidity, non-condensing
RF Input Power	dBm	-	30 dBm	-
Power Dissipation	dBm	-	21 dBm	Internal

\*Stresses above those listed under "Absolute Maximum Rating" may cause permanent damage to the device. This is a stress rating only and functional operation of the device at these or any other conditions above those indicated in the operational sections of this specification is not implied. Exposure to absolute maximum rating conditions for extended periods may affect device reliability.



Data taken with Agilent N5242 PNA-X Vector Network Analyzer

## Outline Drawing



## Outline Dimensions (inch/mm)

A	B	C	D	E	F	G
.83	.83	.75	.37	.42	1.25	.100
21.08	21.08	19.05	9.40	10.67	31.75	2.54
H	J	K	L	M	N	wt
1.150	.095	.735	.21	.106	.06	grams
29.21	2.41	18.67	5.33	2.69	1.52	22.0